



**M/Y CHARADE
FOR SALE**

SPECIFICATION

Builder - Benetti

Built - 2018

Length - 38,10 M

Beam - 8,45 M

Draft - 2,08 M

Guests - 11 In 5 Cabins

Cruising Speed - 17.5 Kn

Hull - Grp

Gross Tonnage - 347

Engines - 2 X Mtu 16V2000M96L

Engine H - P. 1.729; Stbd. 1.728

Generators - 2 X Kohler 80EFOZDJ

Generator H - F. 2.699; B. 2.709

**ASKING PRICE: € 16,950,000
(VAT PAID)**



INTERIOR AND EXTERIOR

The sporty, flowing exterior lines are designed by **Stefano Righini**, while the interior decor by renowned UK-based design firm **RWD** was enriched during construction with contributions from both the owner's and the shipyard's team, working in close collaboration.

There are three possible configurations for Fast 125' models, Air, Land and Sea, and "Charade" is fitted out with the Air option, the more contemporary of the three, featuring a **modern design with clean, simple lines embellished by polished metal accents**. In fact, steel is used for the frames of both the numerous works of art on board, chosen and supplied by the owner, and for the televisions and bedheads. The carpet, which is of a different colour in each setting, has a circle leitmotif, like the decorations on the glass surfaces, balustrades and shower doors. All the ceilings are clad in majilite and leather.

There was a special focus during the design process on lighting, with extensive use of innovative thin light panels integrated into the décor of the interiors, while outdoors the lights are all RGB, including the underwater lights and yacht name lighting, and can be changed to any colour in the spectrum in perfect synchrony.











CABINS AND LIVING AREAS

The main deck are the living space with dining area and the roomy kitchen, from which the crew has access to their own cabins on the Lower Deck or the pantry on the Upper Deck using special stairways. This solution means that excellent service can be provided at all times, without ever encroaching on the privacy of the guests on board.

Forward on the Main Deck is the **full-beam owner's cabin**. Flooded with natural light that pours in through huge glazed surfaces on both sides, it is appointed with a master his and hers bathroom decorated with elegant onyx and "larch" marble.

The four guest cabins are located on the Lower Deck: two symmetrically-positioned VIP cabins with double beds and bathrooms decorated with varieties of white marble, and two guest cabins with sliding and one with pullman bed.

To reach the Upper Deck, guests can use a **steel and glass aerial stairway specially designed by RWD** and customized with backlit stone step tops. Here there is a more informal living area with a **plexiglass grand piano, a gaming table and a sofa area with television**, representing the ideal space for some rest and relaxation on board. Outside, there is a spacious area for dining and relaxing, furnished with teak and steel drop-leaf tables that can be found in all the outdoor spaces.





M/Y CHARADE - MAIN SALON



M/Y CHARADE - MAIN SALON



M/Y CHARADE - MAIN SALON



M/Y CHARADE - MAIN SALON



M/Y CHARADE - MAIN SALON



M/Y CHARADE - MAIN DINING



M/Y CHARADE - UPPER SALON



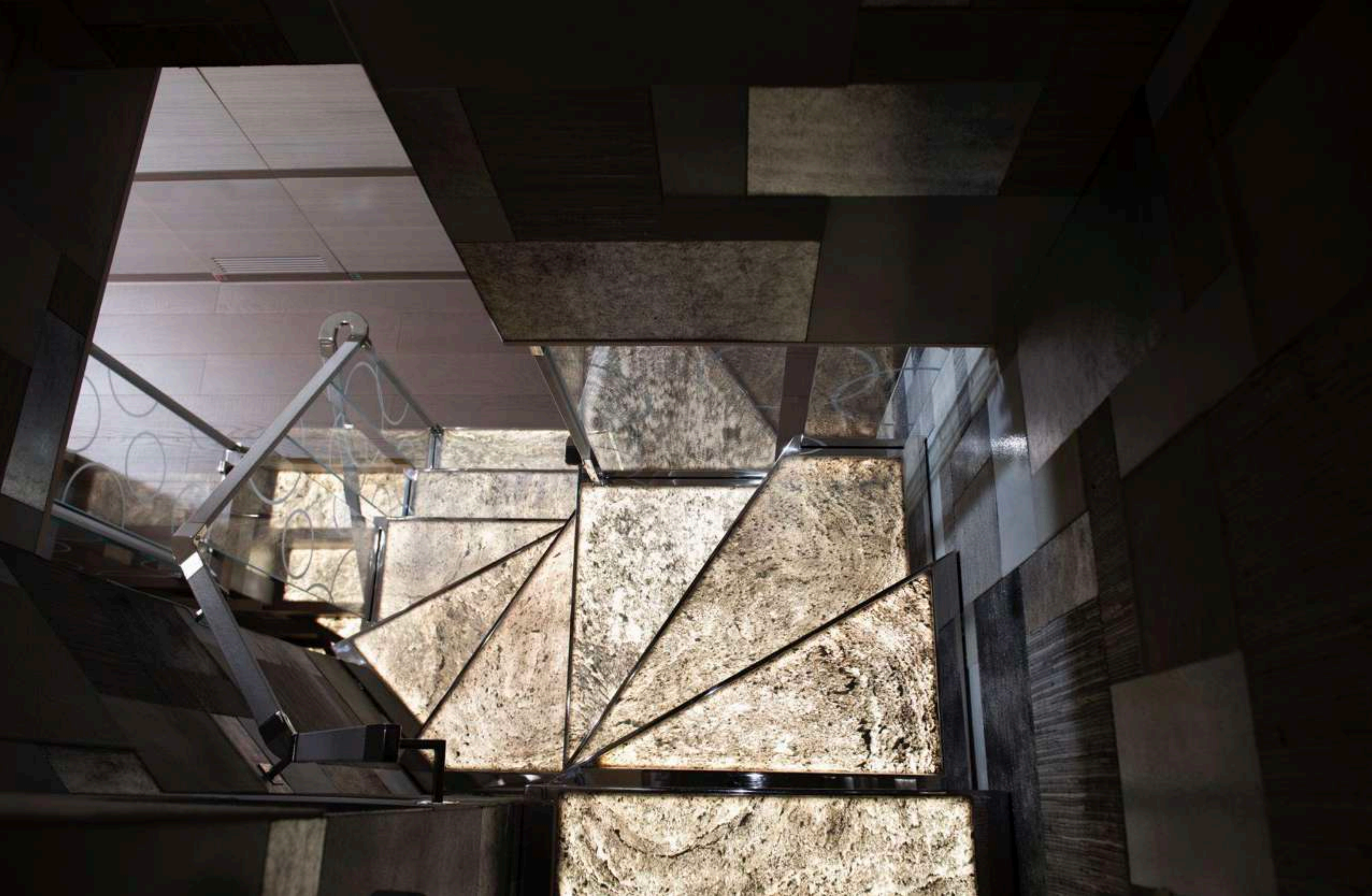
M/Y CHARADE - UPPER SALON



M/Y CHARADE - UPPER SALON



M/Y CHARADE - UPPER SALON





M/Y CHARADE - LOWER DECK



M/Y CHARADE - OWNER SUITE



M/Y CHARADE - OWNER SUITE



M/Y CHARADE - OWNER SUITE



M/Y CHARADE - OWNER BATH



M/Y CHARADE - VIP CABIN



M/Y CHARADE - VIP CABIN



M/Y CHARADE - GUEST CABIN



M/Y CHARADE - GUEST CABIN





GRAND AVANT



M/Y CHARADE - BEACH CLUB



M/Y CHARADE - BEACH CLUB



M/Y CHARADE - BEACH CLUB



M/Y CHARADE - BEACH CLUB



M/Y CHARADE - BEACH CLUB



M/Y CHARADE - COCKPIT AREA



M/Y CHARADE - COCKPIT AREA



M/Y CHARADE - BOW AREA



M/Y CHARADE - BOW AREA



M/Y CHARADE - BOW AREA



M/Y CHARADE - BOW AREA



M/Y CHARADE - UPPER DECK AFT



M/Y CHARADE - EXTERNAL DINING



M/Y CHARADE - EXTERNAL DINING



M/Y CHARADE - SUNDECK



M/Y CHARADE - SUNDECK



M/Y CHARADE - SUNDECK



M/Y CHARADE - SUNDECK



M/Y CHARADE - SUNDECK



M/Y CHARADE - SUNDECK





M/Y CHARADE - GARAGE



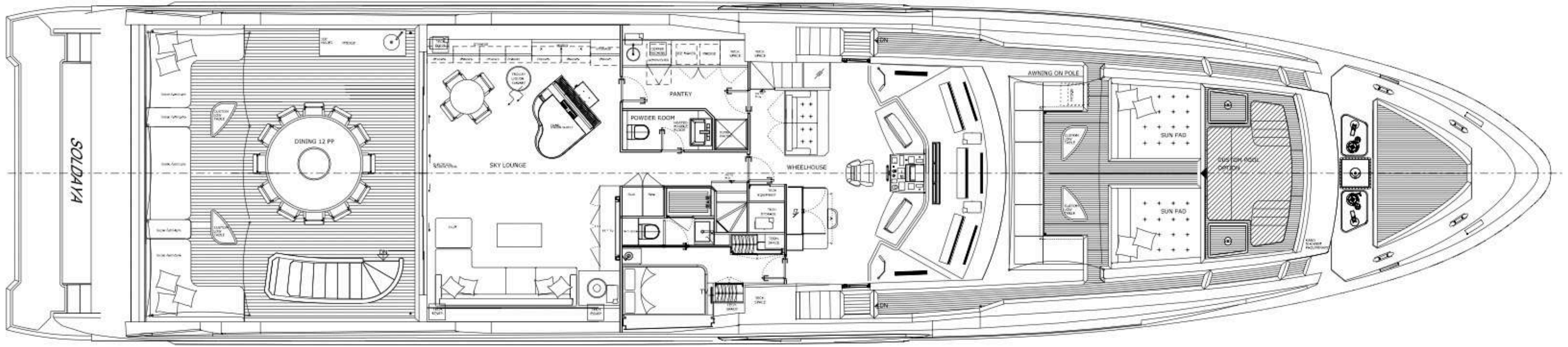
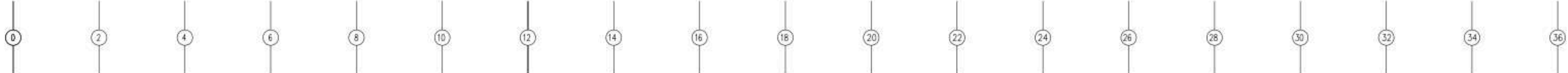
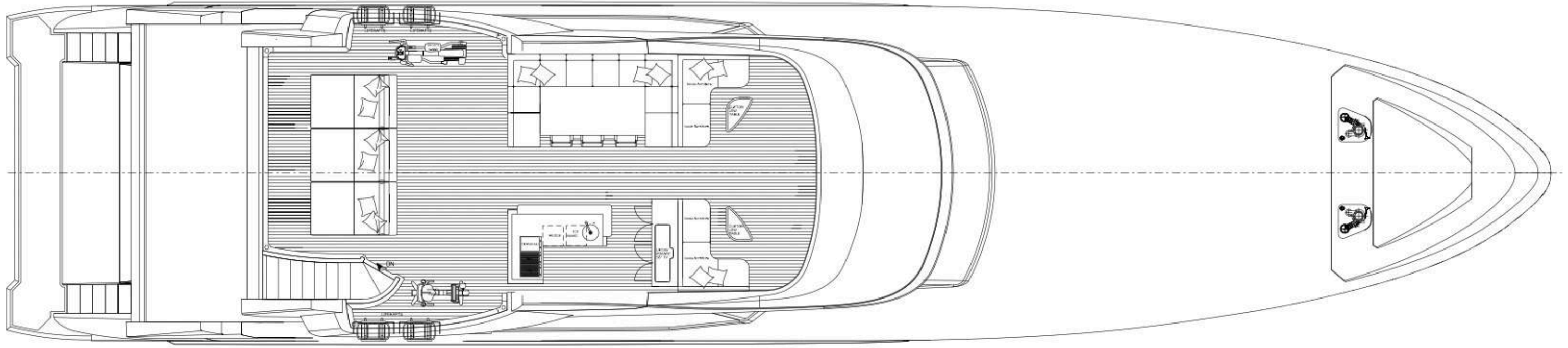
M/Y CHARADE - GARAGE

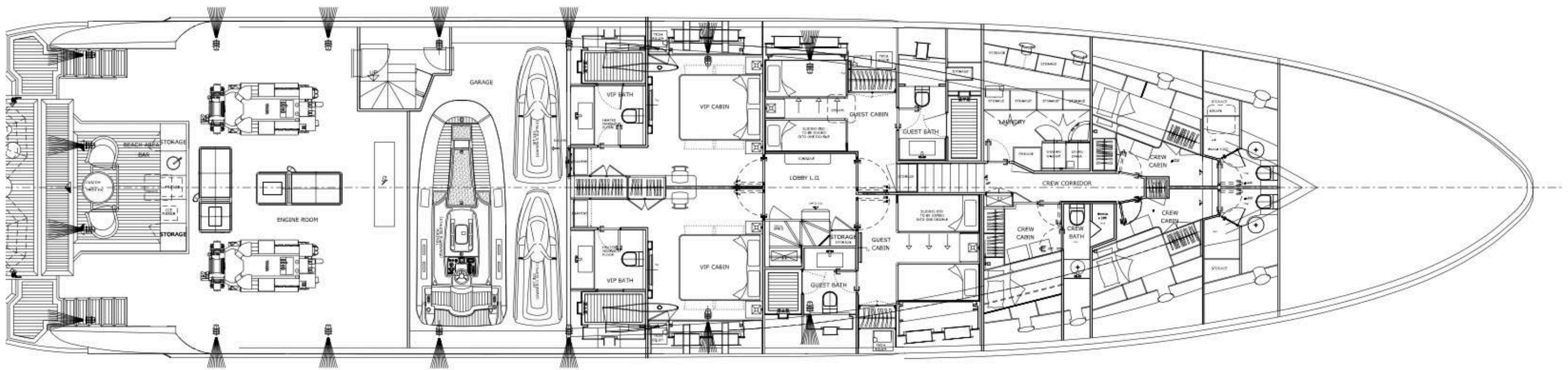
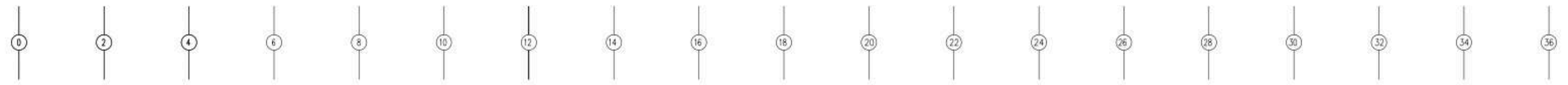
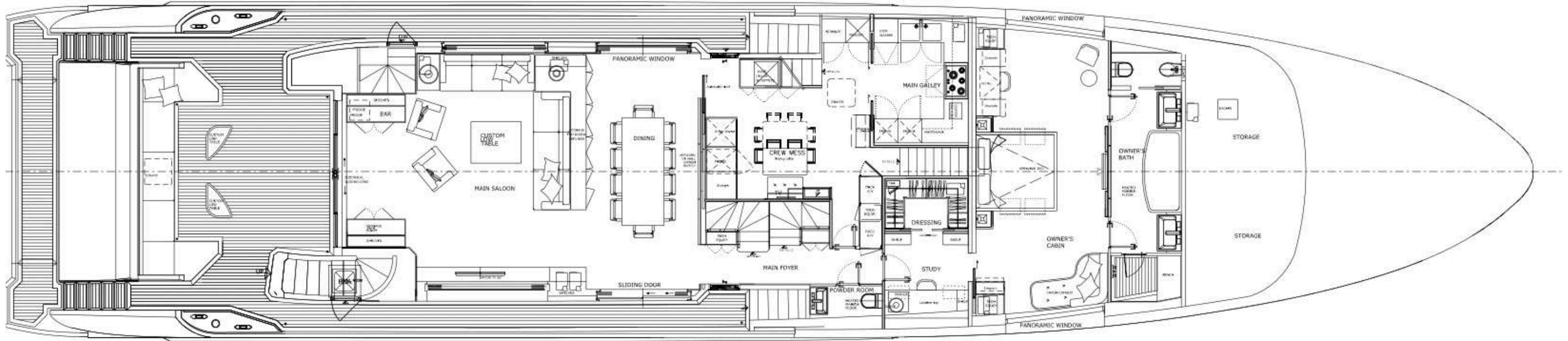


M/Y CHARADE - ENGINE ROOM



M/Y CHARADE - WHEELHOUSE





Lists of more significant repair and maintenance works completed since February 2023

Istanbul, Turkey, 2023

General

- Annual Flag and Class Surveys completed
- 5 years RINA survey completed

LSA & FFE

- Annual service of Fire Extinguisher's
- Annual service of all Life jackets
- Annual service of BA Fire fighting equipment
- Annual service of x 4 Life rafts and hydrostats
- Annual service of the FM200 system.
- New pyrotechnics in 2022
- Full Medical kit update through YMS.
- New 2x Life Boyes
- New EPIRB and hydrostat realise

Bridge Equipment & Comms

- New GPS
- New autopilot
- New FLIR Camera and control unit
- New Weather station sensor
- ECDIS PC Repair (All updates and maintenance completed)
- 3d NavNet Furuno Chart Updater installed
- New 7x Hytera UHF radios

Exterior Works completed

- International Ultra 300 anti-fouling applied
- Prospeed Applied to Propellers, and bow thruster
- The anchor chain was cleaned, and new markings painted
- Anchor plates were cleaned and reinstalled to avoid leakage.
- Anchor polished
- Windlass motors serviced.
- Transom Door polished
- Beach Club Marble and wood chips repaired and polished
- Swim Platform's new custom-made awning with carbon poles and pulley s.
- Upholstery work done to exterior cushions and zips
- All Deck tables repainted
- Passarella was repainted and corrosion removed
- All rails polished
- Sundeck showers replaced
- Various exterior grills replaced
- New Liros 34mm Mooring lines with a spliced leather eye
25 Meter 34mm x2
20 Meter 34mm x2
- Polishing all exterior marbles tables
- New Fender covers on all fenders
- DOMs repainted
- Garage doors, all sensors replacement
- The Jacuzzi control unit replaced

Tender & Toys

- Williams 565 dieseljet tender annual service
- 2x Seadoo Spark 2 seats annual service
- Seabobs service
- 2x Fliteboard serviced

Interior

- Interior Marble Polished professionally
- Scratch and dent repairs are done on the interior wood.
- All carpets changing by warranty in 2021
- Crew cabin bath wood repaired

AV/IT

New AV/IT Equipment

- New TV in Crewmess
- New Satellite TV unit

Engineering

Main engines

- yearly maintenance
- oil analysis done

Gearboxes

- yearly maintenance (oil change and oil cooler cleaning done)

Generators

- yearly maintenance
- exhaust elbow changed

Shore power transformer

- Checked by authorized engineers

CMC stabilizers

- Yearly maintenance
- Control unit replaced

Fresh water system

- Hot water boilers cleaned
- Water softener complete overhaul
- Water maker salinometer and regulating valve checked
- All freshwater tanks cleaning and touch up done
- UV lamp and sensor replaced
- Freshwater analysis done

HVAC

- Service done
- Compressor oil analysis
- Condenser cleaning done
- All fan coils cleaning
- Making unit motor and fan bearings replaced

Sewage system

- All black and grey water lines cleaned with chemicals from each toilet and sink
- Ecomare plant maintenance done (replaced air distribution block, all valve actuators have been overhauled)
- The sewage tank has been cleaned

Bow thruster

- Yearly maintenance

Anchor windlasses

- early maintenance by Italywinch
- brake pads replaced

Kongsberg Azipull system

- 5 year's service by Kongsberg

Alfalaval separation system

- Annual service is done.



Charade

Benetti

FAST 125